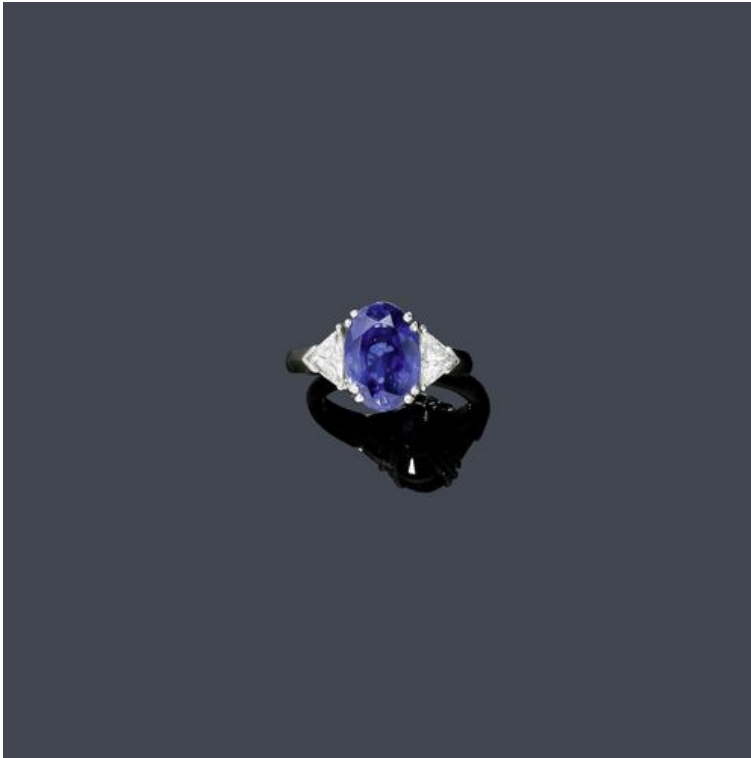


**Koller Auktionen - 拍品 2038**  
**A160 首饰 - Dienstag 27 März 2012, 02.00 PM**

---



SAPPHIRE AND DIAMOND RING. White gold 750. Classic ring, the top set with 1 oval sapphire of 6.07 ct, untreated, flanked by 2 triangle-cut diamonds weighing ca. 0.96 ct. Size ca. 51, shank slightly oval. With Jeweller's certificate, February 2010 and Gübelin Report No. 0601015, January 2006.

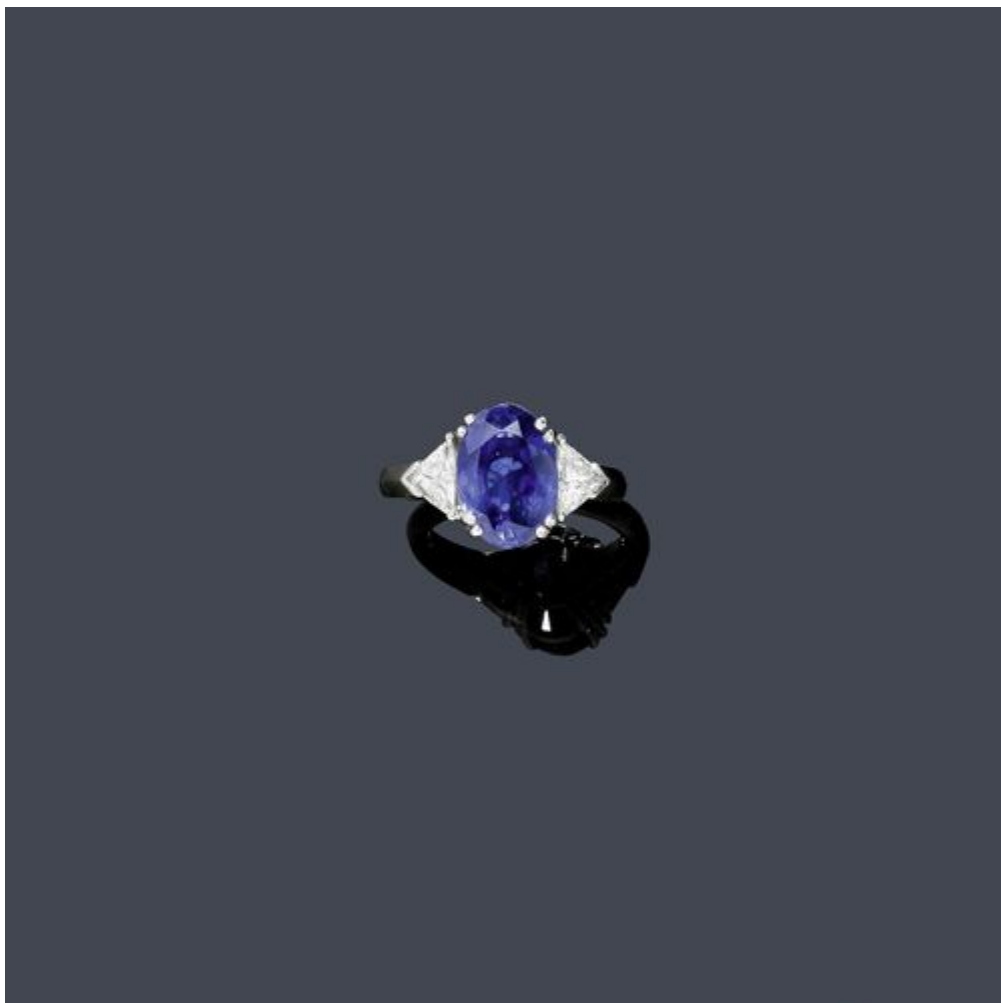
Weissgold 750.


Klassischer Ring, die Schauseite besetzt mit 1 ovalen Saphir von 6.00 ct, unbehandelt, flankiert von 2 Diamant-Trillanten von zus. ca. 0.96 ct. Gr. ca. 51, Schiene leicht oval.

Mit Schmuckzertifikat, Februar 2010, und Gübelin Report Nr. 0601015, Januar 2006.

CHF 4 000 / 6 000


€ 4 120 / 6 190



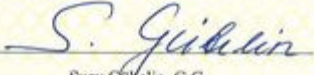
  
**GÜBELIN**  
GEM LAB


**GEMMOLOGISCHER BERICHT · RAPPORT GEMMOLOGIQUE**  
**GEMMOLOGICAL REPORT**

No. Datum - Date	0601015 12 January 2006
Gegenstand Objet Item	One faceted gemstone (tested insofar as mounting permits), set in a white metal ring with two triangular diamonds.
Gewicht Poids Weight	6.07 ct (as indicated by the client)
Schliff Taille Cut	oval, brilliant cut / step cut
Abmessungen Dimensions Measurements	approximately 28.00 x 8.55 x 5.80
Transparenz Transparence Transparency	transparent
Farbe Couleur Colour	blue
IDENTIFIKATION IDENTIFICATION IDENTIFICATION	NATURAL SAPPHIRE (CORUNDUM)
Bemerkungen Commentaires Comments	No indications of heating (NTE).



**GEMMOLOGISCHES LABOR · LABORATOIRE GEMMOLOGIQUE · GEMMOLOGICAL LABORATORY**  
Maihofstrasse 102 · 6006 Lucerne · Switzerland · Tel. (41) 41 - 429 17 17 · Fax (41) 41 - 429 17 34  
www.gubelinlab.com · info@gubelingemlab.ch

  
Susy Gübelin, G.G.

  
Dr. Dietmar Schwarz, Ph.D.

Wichtige Anmerkungen und Einschränkungen auf der Rückseite · Remarques au verso · Important notes and limitations on the reverse.  
Copyright©2004 Gübelin Gem Lab Ltd.