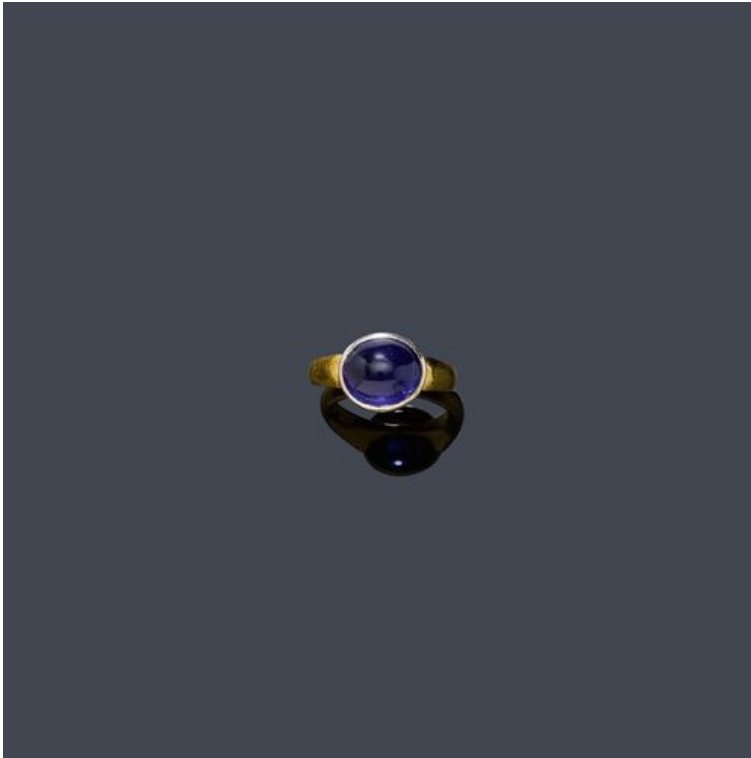


**Koller Auktionen - Lot 2224\***  
**A160 Schmuck - Dienstag 27 März 2012, 14.00 Uhr**

---



BURMASAPHIR-RING, CARTIER.

Gelb- und Weissgold 750.

Sportliches, schlichtes Modell, die Schauseite besetzt mit 1 feinen, ovalen Saphir-Cabochon von 7,86 ct, unerhitzt, in Weissgold Ringfassung. Signiert Cartier. Gr. ca. 52,5.

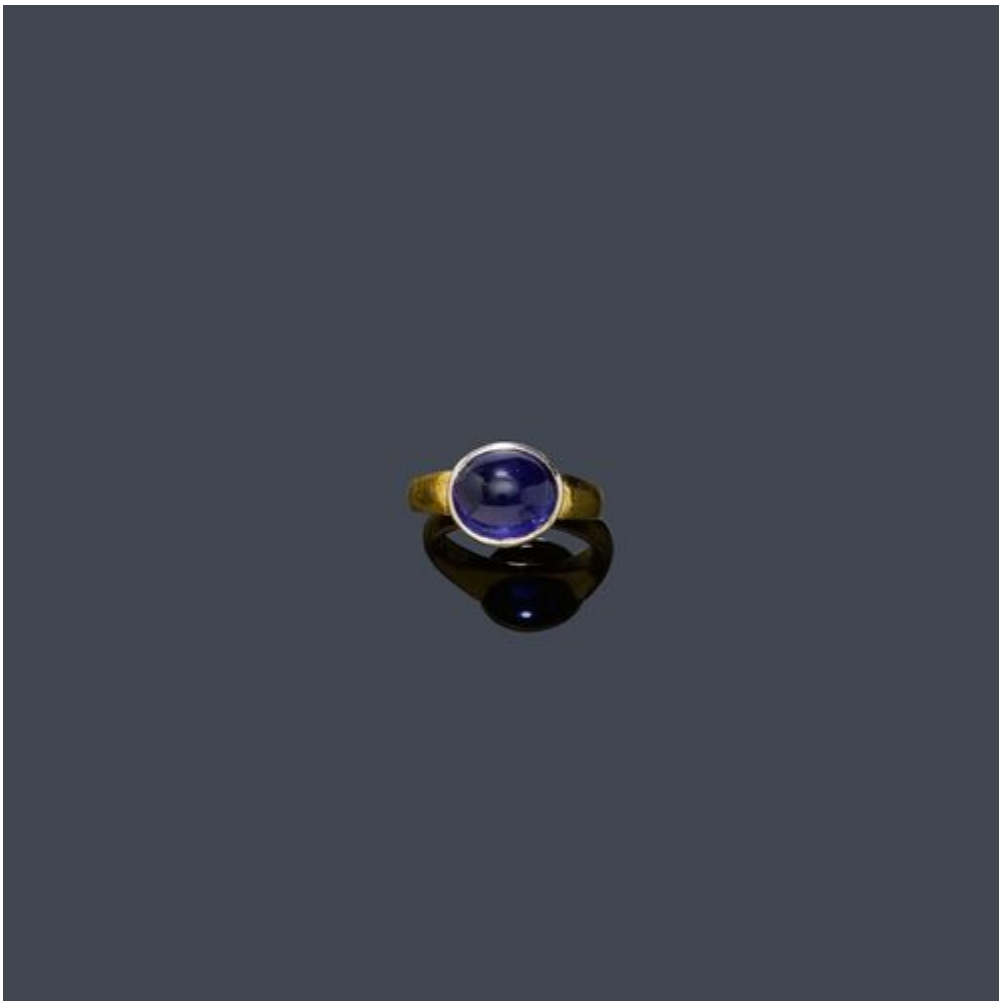
Mit SSEF Report Nr. 59488, Mai 2011.

CHF 20 000 / 30 000

€ 20 000 / 30 000

**Koller Auktionen - Lot 2224\***  
**A160 Schmuck - Dienstag 27 März 2012, 14.00 Uhr**

---

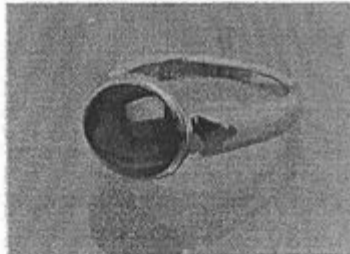


**Koller Auktionen - Lot 2224\***  
**A160 Schmuck - Dienstag 27 März 2012, 14.00 Uhr**

SCHWEIZERISCHES GEMMOLOGISCHES INSTITUT  
INSTITUT SUISSE DE GEMMOLOGIE  
SWISS GEMMOLOGICAL INSTITUTE

Falknerstrasse 9  
CH-4001 Basel / Switzerland  
Telephone +41 61 262 0640  
Telefax +41 61 262 0641  
e-mail gemlab@ssef.ch  
homepage www.ssef.ch

SSEF



TEST REPORT No. 59488

on the authenticity of the following gemstone,  
mounted in a ring

Shape & Cut: oval, cabochon  
Total weight: approximately 8.8 grams  
(including mounting)  
Measurements: approximately 10.65 x 8.95 x 7.50 mm  
Calculated weight: approximately 7.9 ct  
Colour: blue of medium strong saturation

Identification: S A P P H I R E (variety of natural corundum)

Comments: The analysed properties confirm the authenticity  
of this transparent sapphire.

No indications of heating.

Origin: Burma (Myanmar)

The calculated weight is in accordance with the weight of 7.86 ct  
declared by the customer.

Important note: The conclusions on this Test Report reflect our findings at the time it is issued. A gemstone can be modified and / or enhanced  
at any time. Therefore, the SSEF can reconfirm at any time that the stone is in accordance with the Test Report.

Please see comments on reverse side.

SSEF - SWISS GEMMOLOGICAL INSTITUTE  
Gemstone Testing Division

Basel, 9 May 2011 cy

J.-P. Chalain, DUG



P. Lefèvre, MSc, DUG