

**UNGEFASSTER BRILLANT.**

Ungefasster Brillant von 6.03 ct, D/IF, Typ IIA. Mit GIA Report Nr. 1146762802, begleitet von einem zusätzlichen Bestätigungsbrief vom Gemmological Institute of America für seine Identifizierung als Typ IIA. Typ IIA entspricht der chemisch reinsten Diamantgruppe und besitzt eine ausserordentliche optische Transparenz. Weniger als 2% aller Edelstein-Diamanten gehören zum Typ IIA. Die Typ IIA-Gruppe wurde zuerst für Diamanten von indischer Herkunft (besonders aus der Golconda Region) bestimmt, aber seither werden in allen bedeutenden Diamant-Vorkommen der Welt solche Diamanten gefunden. Dazu gehören berühmte Diamanten wie zum Beispiel der Cullinan I von 530.20 ct und der Koh-i-noor von 105.60 ct.

---

Koller Auktionen, Hardturmstrasse 102, 8031 Zürich. Tel +41 44 445 63 63. [office@kollerauktionen.ch](mailto:office@kollerauktionen.ch)

**A163 Schmuck - Dienstag 04 Dezember 2012,  
14.00 Uhr**

---

style="color:#747474 !important;">

Dieser Brillant wurde aus einem Rohdiamant von 15.93 ct geschliffen. Fundort des Rohsteines ist die Mine Letseng, in den Maluti Bergen von Lesotho. Während mehr als 3 Monaten wurde der Diamant mit hochmoderner Technologie und Ausrüstung von der weltweit tätigen Brachfeld-Group geschliffen um den höchsten Schliffgrad zu erreichen: Excellent Cut, Polish und Symmetrie.

**CHF 790 000 / 1 200 000**

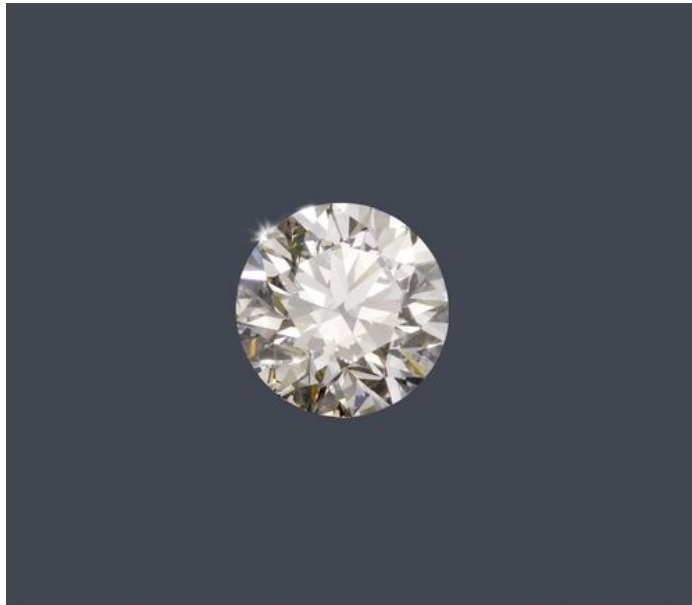
**€ 738 320 / 1 121 500**

---

Koller Auktionen, Hardturmstrasse 102, 8031 Zürich. Tel +41 44  
445 63 63. office@kollerauktionen.ch

14.00 Uhr

---



---

Koller Auktionen, Hardturmstrasse 102, 8031 Zürich. Tel +41 44  
445 63 63. office@kollerauktionen.ch

**Koller Auktionen - Lot 2084\***  
**A163 Schmuck - Dienstag 04 Dezember 2012,**  
**14.00 Uhr**

---



---

Koller Auktionen, Hardturmstrasse 102, 8031 Zürich. Tel +41 44  
445 63 63. [office@kollerauktionen.ch](mailto:office@kollerauktionen.ch)

**Koller Auktionen - Lot 2084\***  
**A163 Schmuck - Dienstag 04 Dezember 2012,**  
**14.00 Uhr**

---

DIAMOND GRADING REPORT

GIA REPORT 1146762802

June 11, 2012

Laser Inscription Registry ..... **GIA 1146762802**  
Shape and Cutting Style ..... **Round Brilliant**  
Measurements ..... **11.65 - 11.73 x 7.25 mm**

**READING RESULTS - GIA 412**

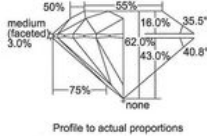
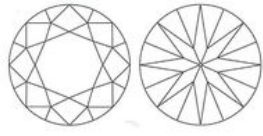
Carat Weight ..... **6.03 carat**  
Color Grade ..... **D**  
Clarity Grade ..... **INTERNALLY FLAWLESS**  
Cut Grade ..... **Excellent**

**IDENTIFIABLE GRADING INFORMATION**

Finish .....  
Polish ..... **Excellent**  
Symmetry ..... **Excellent**  
Fluorescence ..... **None**  
Comments:  
Minor details of polish are not shown.

**REFERENCE DIAGRAMS**

GIA COLOR SCALE		GIA CLARITY SCALE		GIA CUT SCALE	
D	FLAWLESS	EXCELLENT			
E	INTERNAL FLAWLESS	VERY GOOD			
F	FLAWLESS	GOOD			
G	VERY FLAWLESS	FAIR			
H	FLAWLESS	POOR			
I	VERY FLAWLESS				
J	FLAWLESS				
K	VERY FLAWLESS				
L	FLAWLESS				
M	VERY FLAWLESS				
N	FLAWLESS				
O	VERY FLAWLESS				
P	FLAWLESS				
Q	VERY FLAWLESS				
R	FLAWLESS				
S	VERY FLAWLESS				
T	FLAWLESS				
U	VERY FLAWLESS				
V	FLAWLESS				
W	VERY FLAWLESS				
X	FLAWLESS				
Y	VERY FLAWLESS				
Z	FLAWLESS				



This Report is not a guarantee, valuation or appraisal and contains only the observations of the diamond described herein. After it has been issued, tested, examined and signed by the laboratory providing this Report (GIA), neither has been modified using the techniques and equipment used by GIA at the time of the examination. Incomplete inscriptions reported in this document are not a guarantee, valuation, or warranty of a diamond's quality, purity of origin or source or that the diamond will be identifiable by the inscription in the future. Some inscriptions can be removed. GIA makes no representation concerning any trademark, name, or symbol which is included by GIA or which is identified on this Report. The recipient of this Report may wish to consult a certified dealer or jeweler about the diamond's natural form.

**KEY TO SYMBOLS**

Red symbols denote internal characteristics (inclusions). Green or black symbols denote external characteristics (blemishes). Diagram is an approximate representation of the diamond, and symbols shown indicate type, position, and approximate size of clarity characteristics. All clarity characteristics may not be shown. Details of finish are not shown.

**IMPORTANT LIMITATIONS ON BACK**  
©2008 GEMOLOGICAL INSTITUTE OF AMERICA, INC.

Koller Auktionen, Hardturmstrasse 102, 8031 Zürich. Tel +41 44 445 63 63. office@kollerauktionen.ch

**Koller Auktionen - Lot 2084\***  
**A163 Schmuck - Dienstag 04 Dezember 2012,**  
**14.00 Uhr**



June 11, 2012

**DIAMOND TYPE CLASSIFICATION FOR GIA DIAMOND GRADING REPORT #1146762802**

Scientists classify diamonds into two main "types" - type I and type II - based on the presence or absence of nitrogen which can replace carbon atoms in a diamond's atomic structure. These two diamond types can be distinguished on the basis of differences in their chemical and physical properties. Type II diamonds contain little if any nitrogen and they are subdivided into two groups (IIa and IIb) both of which are quite rare (less than 2% of all gem diamonds).



According to the records of the GIA Laboratory, the 6.03 carat Round Brilliant diamond described in GIA Diamond Grading Report #1146762802 has been determined to be a **type IIa** diamond. Type IIa diamonds are the most chemically pure type of diamond and often have exceptional optical transparency. Type IIa diamonds were first identified as originating from India (particularly from the Golconda region) but have since been recovered in all major diamond-producing regions of the world.

Among famous gem diamonds, the 530.20 carat Cullinan I and the 105.60 carat Koh-i-noor are examples of type IIa.

PLEASE REFER TO IMPORTANT LIMITATIONS ON THE BACK OF THIS DOCUMENT.

The World's Foremost Authority in Gemology™ | Ensuring the Public Trust through Nonprofit Service since 1931

Koller Auktionen, Hardturmstrasse 102, 8031 Zürich. Tel +41 44 445 63 63. [office@kollerauktionen.ch](mailto:office@kollerauktionen.ch)