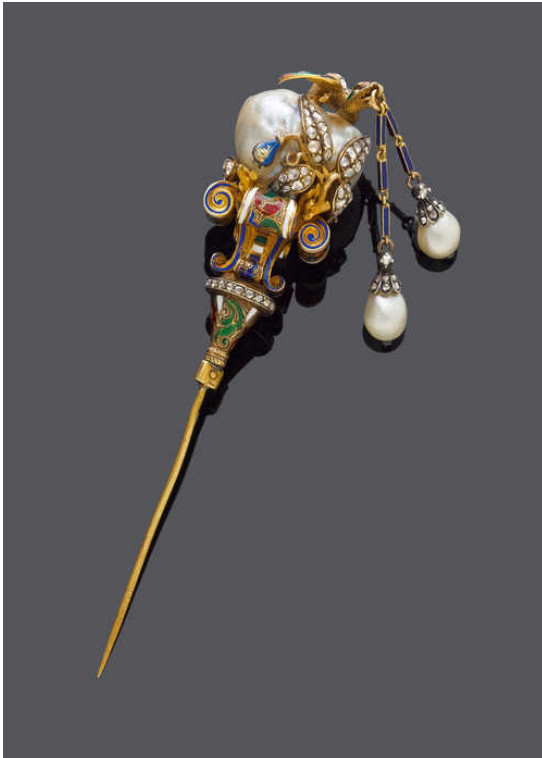


Koller Auktionen - Lot 2104*
A181 Schmuck - Donnerstag 29 Juni 2017, 14.00 Uhr



EMAIL-NATURPERLEN-DIAMANT-PIN, um 1890.

Gelbgold.

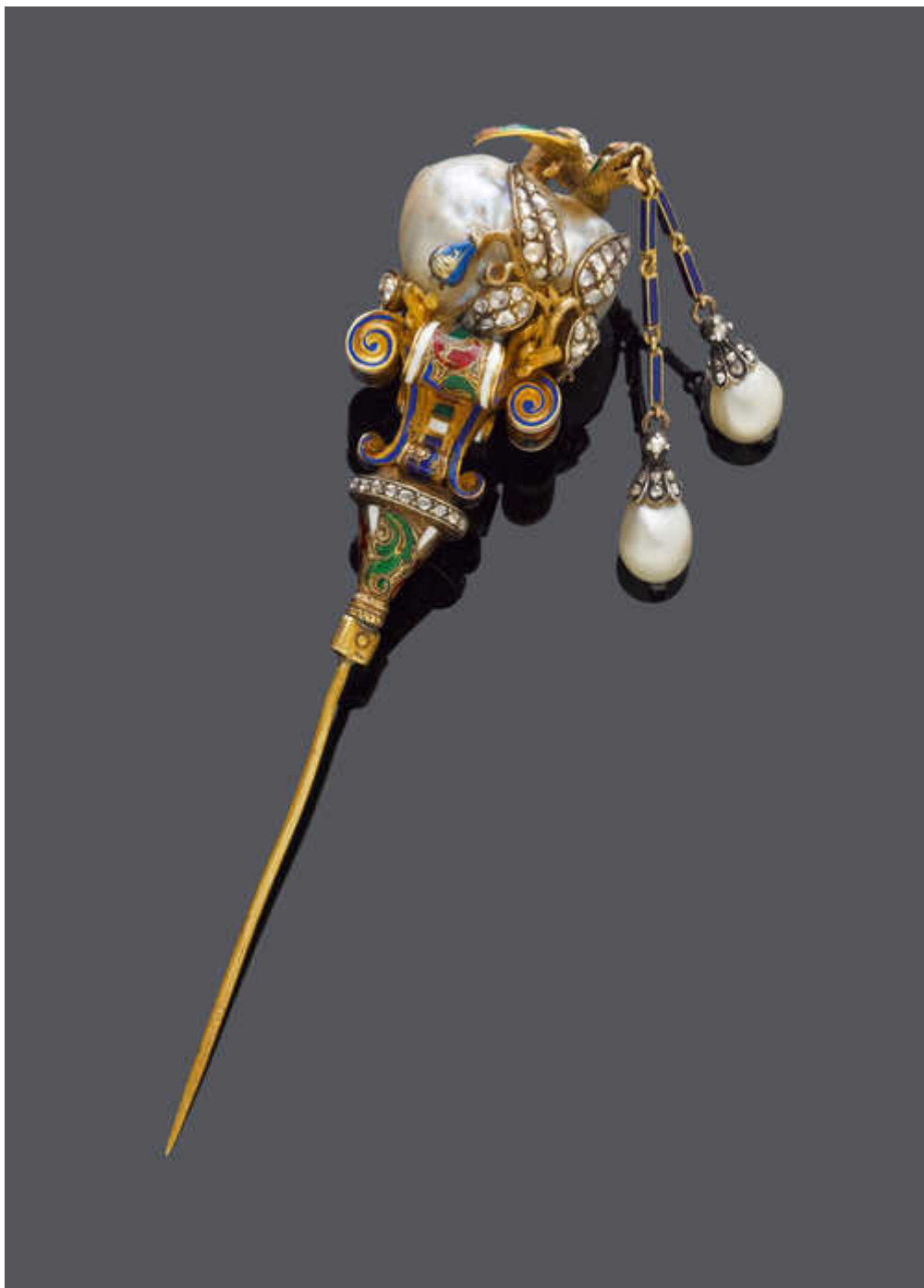
Sehr dekorativer Neorenaissance-Pin, besetzt mit 1 grossen, barocken Naturperle von ca. 22 x 19 mm, verziert mit eingerollten Bandmotiven, Blatt- und Blütenmotiven, sowie als Aufsatz 1 plastisch gestaltete Drachenfigur mit 2 Perlen-Pendentifs im Schnabel, von ca. 7,2 x 7,9 mm. Zusätzlich verziert mit polychromem Email und zahlreichen Diamantrosen. L ca. 11 cm.

Provenance: Private property - Christie's lot 243, 3 June, 2015. With GPL-Report no. 11072, April 2015.

CHF 13 000 / 18 000

€ 13 000 / 18 000

Koller Auktionen - Lot 2104*
A181 Schmuck - Donnerstag 29 Juni 2017, 14.00 Uhr





THE GEM & PEARL LABORATORY

11072

1 April 2015

PEARL REPORT



- Description:**
- Examined:**
- 1) an irregular part-drilled hollow 'pearl' with one larger and several smaller openings on the surface of the 'pearl'
 - 2) two irregular oval, drilled 'pearls' mounted with numerous rose-cut, colourless stones on a white, red, blue, and green enamel hat pin
- Measurements:**
- 1) Width ~ 20 - 22 mm, length ~ 18 - 19 mm
 - 2) 7.7 - 8.0 mm in width, length 10 - 11 mm;
7.2 - 7.9 mm in width, length ~ 9 - 10 mm
- Weight of item:** 39.41 grams
- Result:**
- 1) PART-FILLED NATURAL HOLLOW PEARL (SALTWATER)
 - 2) TWO NATURAL PEARLS (SALTWATER)

The Gem & Pearl Laboratory Limited follows the guidelines of the World Jewellery Confederation (CIBJO).

This report is issued subject to the conditions printed on the report cover.

Only the original report with signature, security foil, ultra violet fluorescent watermark, and embossed stamp is a valid identification document.



S. J. Kennedy

Stephen Kennedy BSc FGA DGA

FOR AND ON THE BEHALF OF
The Gem & Pearl Laboratory Limited
43 Kirby Street • London • EC1N 8TE