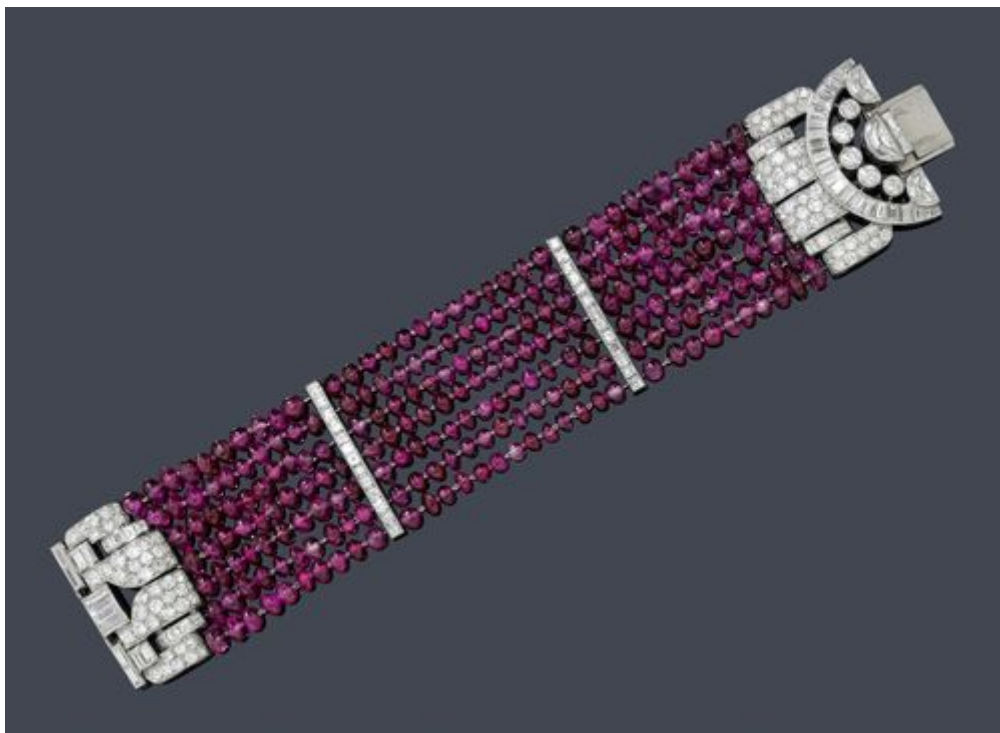


**Koller Auktionen - Lot 2165**

**A160 Jewellery - Tuesday 27 March 2012, 02.00 PM**

---



**RUBY AND DIAMOND BRACELET, VAN CLEEF & ARPELS, ca. 1934.**

Platinum.

Very fancy bracelet of numerous, seven-row fine ruby spheres of ca. 3 - 4 mm Ø. The asymmetrical clasp designed as a stylized buckle set throughout with 3 crescent-shaped diamonds weighing ca. 2.00 ct, 37 baguette-cut diamonds weighing ca. 4.00 ct, 5 brilliant-cut diamonds weighing ca. 0.80 ct, 16 carré-cut diamonds weighing ca. 0.80 ct and 96 pavé-set brilliant-cut diamonds weighing ca. 2.50 ct. Two additional barrette intermediate links decorated with a total of 26 carré-cut diamonds weighing ca. 1.30 ct. Signed Van Cleef & Arpels Paris, No. 42323. Sprung clasp in white gold. L ca. 17.5 cm.

Koller Auctions, Hardturmstrasse 102, 8031 Zürich. Tel +41 44 445 63 63.  
office@kollerauctions.com

**Koller Auktionen - Lot 2165**

**A160 Jewellery - Tuesday 27 March 2012,  
02.00 PM**

---

!important;">

**CHF 15 000 / 20 000**

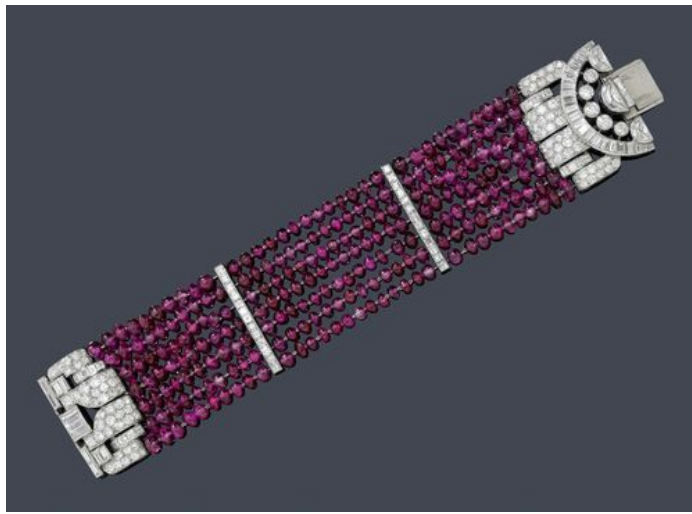
**€ 14 020 / 18 690**

---

Koller Auctions, Hardturmstrasse 102, 8031 Zürich. Tel +41 44  
445 63 63. office@kollerauctions.com

**Koller Auktionen - Lot 2165**  
**A160 Jewellery - Tuesday 27 March 2012,**  
**02.00 PM**

---



---

Koller Auctions, Hardturmstrasse 102, 8031 Zürich. Tel +41 44  
445 63 63. [office@kollerauctions.com](mailto:office@kollerauctions.com)