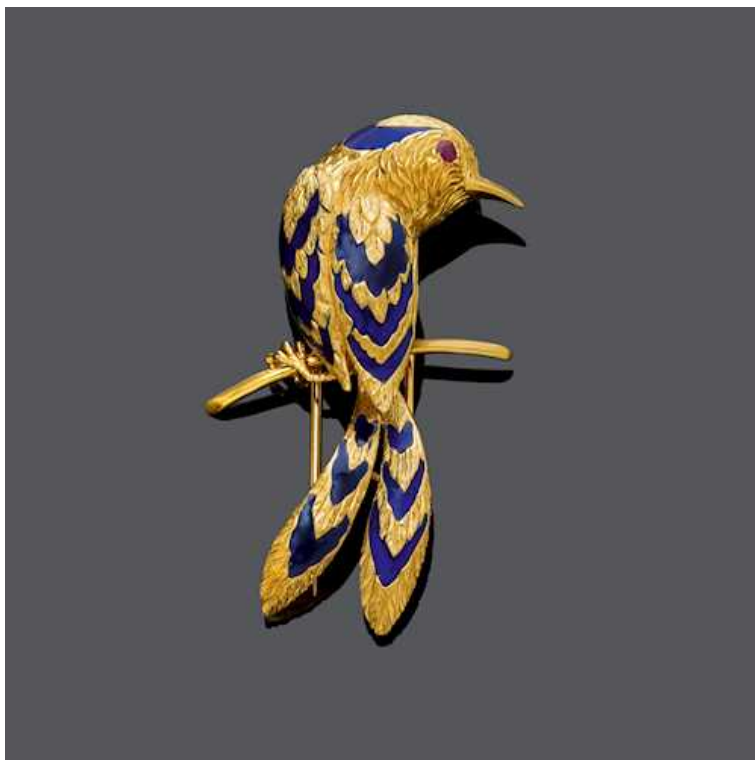


**Koller Auktionen - Lot 2119**

**A192 Jewellery (Part 2) - Wednesday 17 June 2020, 03.30 PM**

---



**ENAMEL, RUBY AND GOLD CLIP BROOCH, BY CARTIER, ca. 1950.**

Yellow gold 750, 18g.

Designed as a bird of paradise resting on a branch, the finely engraved body decorated with translucent blue enamel and 1 round ruby as eye. Signed Cartier Paris, no. 018201. Enamel partially restaured. L ca. 5,4 cm.

**CHF 4 000 / 6 000**

**€ 3 510 / 5 260**

Koller Auktionen - Lot 2119

A192 Jewellery (Part 2) - Wednesday 17 June 2020, 03.30 PM

---

