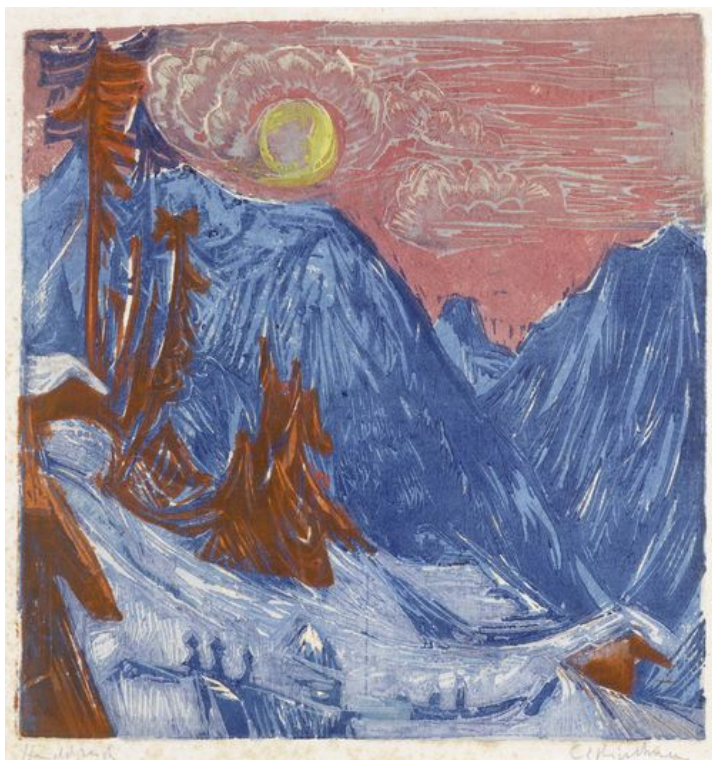


Koller Auktionen - Lot 3419

Z31 Prints & Multiples - Friday 09 December 2011, 11.00 AM



KIRCHNER, ERNST LUDWIG

(Aschaffenburg 1880 - 1938 near Davos)

Moonlight night in winter. 1919.

Colour wood cut made from several blocks in light and dark blue, white, yellow, rust red, pink and green. One of 12 known exemplars.

Signed lower right: EL Kirchner, also inscribed lower left by the artist: Handdruck.
Entitled by hand: Monduntergang.*

Image 31 x 29.4 cm on copper press paper 44.6 x 39.8 cm.

Our thanks to Prof. Dr. Gercken for his expertise. The work will be included in the catalogue raisonné currently being prepared by Prof. Dr. Gercken. It is also included as 12th exemplar at the Kirchner archive Wichtrach/ Bern. Provenance: - Carlo

Koller Auktionen - Lot 3419

Z31 Prints & Multiples - Friday 09 December 2011, 11.00 AM

von Wedekind collection, acquired directly from the artist during a stay at the Spa in Davos. - thence in the family collection. Of the 12 known exemplars, 6 are in public collections: - Sprengel Museum Hanover - Folkwang Museum Essen - Städel Museum Frankfurt - Kunstmuseum Basel - Museum of Modern Art New York - The Art Institute Chicago. Catalogue raisonné: - Dube, No.390/ 2. - Schiefler, No.360. Literature: - Ex cat "Ernst Ludwig Kirchner. Retrospektive", Städel Museum Frankfurt 23.04. - 25.07.2010. - Ex cat "Ernst Ludwig Kirchner. Farbige Druckgraphik", Brücke Museum Berlin 13.09. - 23.11.2008, Paul-Modersohn-Becker-Museum Bremen, 7.12.2008 - 15.02.2009. - Ex cat "Expressionismus aus den Bergen. Kirchner, Bauknecht, Wiegers und die Gruppe Rot-Blau", Kunstmuseum Berlin 27.04. - 19.08.2007, Groninger Museum 22.09.2007 - 13.01.2008, Bündner Kunstmuseum Chur 16.02. - 25.05.2008. - Ex cat "Ernst Ludwig Kirchner. Die frühen Davoser Jahre 1917 - 1926", Kunstmuseum Basel 27.09.2003 - 4.01.2004, p. 15. - Grisebach, Lucius (pub.), Ernst Ludwig Kirchner. Davoser Tagebuch, Ostfildern 1997. - Ex cat "Ernst Ludwig Kirchner. 1880-1938", Nationalgalerie Berlin 29.11.1979 - 20.01.1980, Haus der Kunst München 9.02. - 13.04.1980, u.a., p. 244. - E.L. Kirchner. Briefe an Nele und Henry van de Velde, Munich 1961. - Ex cat "Ernst Ludwig Kirchner", Kunstverein für die Rheinlande und Westfalen, 9.09. - 30.10.1960. * The title was cut off when the sheet was cut and glued on to the back of the frame.

CHF 500 000 / 700 000

€ 438 600 / 614 040

Koller Auktionen - Lot 3419

Z31 Prints & Multiples - Friday 09 December 2011, 11.00 AM

