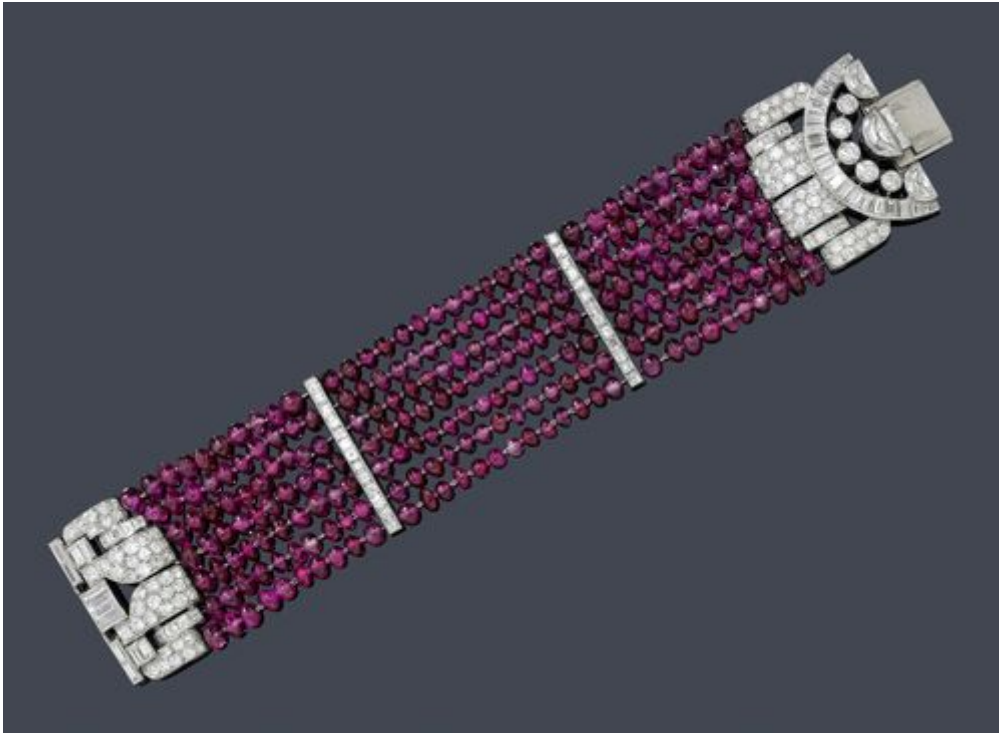


Koller Auktionen - Lot 2165
A160 Joaillerie - mardi 27 mars 2012, 14h00



RUBY AND DIAMOND BRACELET, VAN CLEEF & ARPELS, ca. 1934.

Platinum.

Very fancy bracelet of numerous, seven-row fine ruby spheres of ca. 3 - 4 mm Ø. The asymmetrical clasp designed as a stylized buckle set throughout with 3 crescent-shaped diamonds weighing ca. 2.00 ct, 37 baguette-cut diamonds weighing ca. 4.00 ct, 5 brilliant-cut diamonds weighing ca. 0.80 ct, 16 carré-cut diamonds weighing ca. 0.80 ct and 96 pavé-set brilliant-cut diamonds weighing ca. 2.50 ct. Two additional barrette intermediate links decorated with a total of 26 carré-cut diamonds weighing ca. 1.30 ct. Signed Van Cleef & Arpels Paris, No. 42323. Sprung clasp in white gold. L ca. 17.5 cm.

Koller Auctions, Hardturmstrasse 102, 8031 Zürich. Tel +41 44 445 63 63.
office@kollerauctions.com

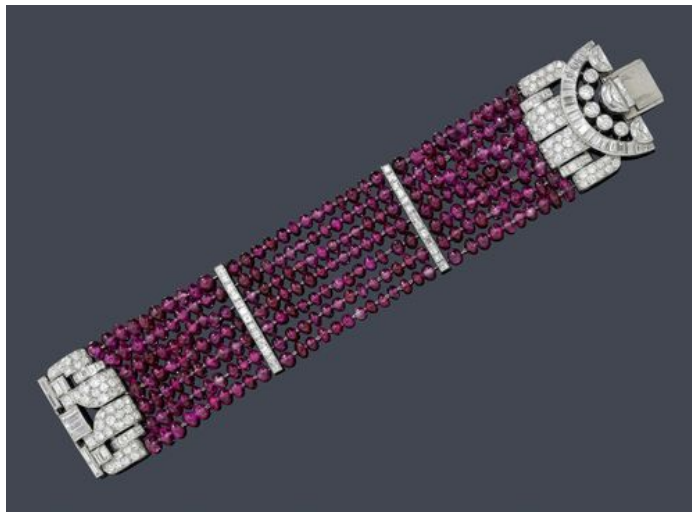
Koller Auktionen - Lot 2165
A160 Joaillerie - mardi 27 mars 2012, 14h00

!important;">

CHF 15 000 / 20 000
€ 14 020 / 18 690

Koller Auctions, Hardturmstrasse 102, 8031 Zürich. Tel +41 44
445 63 63. office@kollerauctions.com

Koller Auktionen - Lot 2165
A160 Joaillerie - mardi 27 mars 2012, 14h00



Koller Auctions, Hardturmstrasse 102, 8031 Zürich. Tel +41 44
445 63 63. office@kollerauctions.com