

UNMOUNTED DIAMOND.

Unmounted brilliant-cut diamond of 6.03 ct, D/IF, Type IIA. With GIA Report No. 1146762802, with an additional letter of certification from the Gemmological Institute of America for its identification as a Type IIA. Type IIA corresponds to the chemically purest group of diamonds and has an exceptional optical transparency. Less than 2% of all gemstone diamonds belong to Type IIA. The Type IIA group was initially determined for diamonds of Indian origin (especially from the Golconda region), but, ever since, such diamonds have been found in all the diamond mines of the world. Examples of famous diamonds are the Cullinan I weighing 530.20 ct and the Koh-i-Noor weighing 105.60 ct. This brilliant-cut diamond was cut from a rough diamond of 15.93 ct. The stone was found in the Letseng

Koller Auktionen - Lot 2084*

A163 Joaillerie - mardi 04 décembre 2012, 14h00

diamond mine, in the Maloti Mountains of Lesotho.

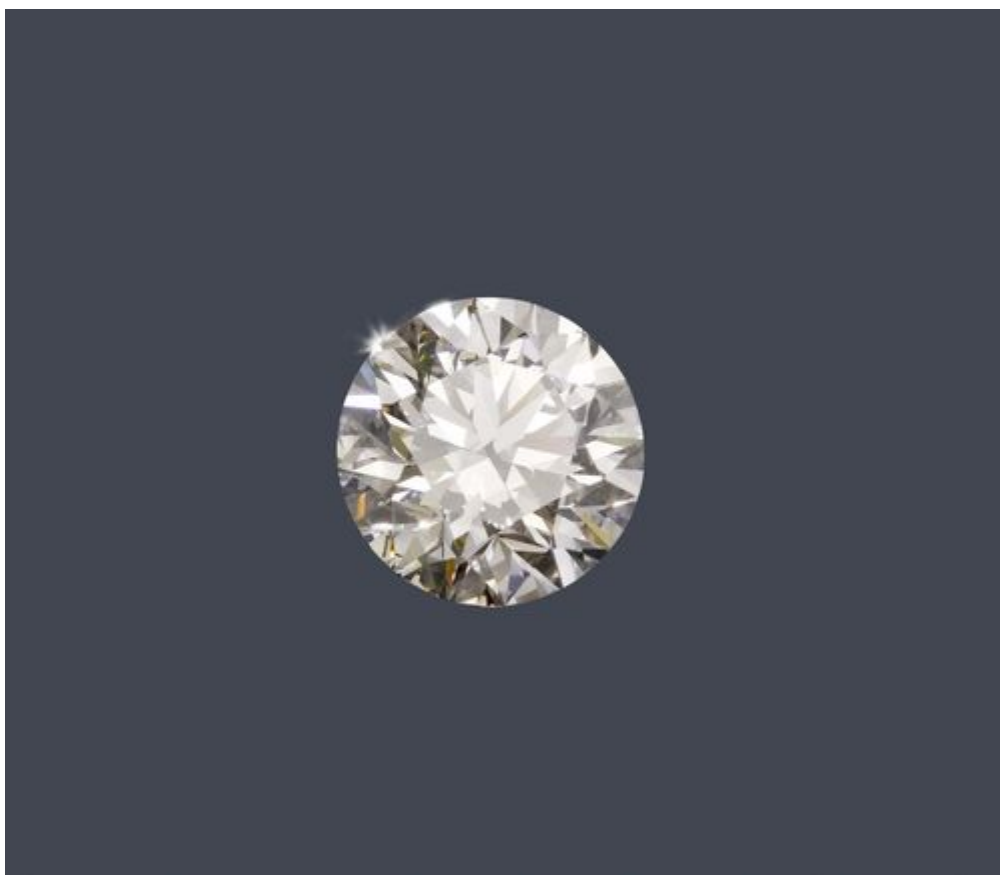
Dieser Brillant wurde aus einem Rohdiamant von 15.93 ct geschliffen. Fundort des Rohsteines ist die Mine Letseng, in den Maluti Bergen von Lesotho. Während mehr als 3 Monaten wurde der Diamant mit hochmoderner Technologie und Ausrüstung von der weltweit tätigen Brachfeld-Group geschliffen um den höchsten Schliffgrad zu erreichen: Excellent Cut, Polish und Symmetrie.

CHF 790 000 / 1 200 000

€ 738 320 / 1 121 500

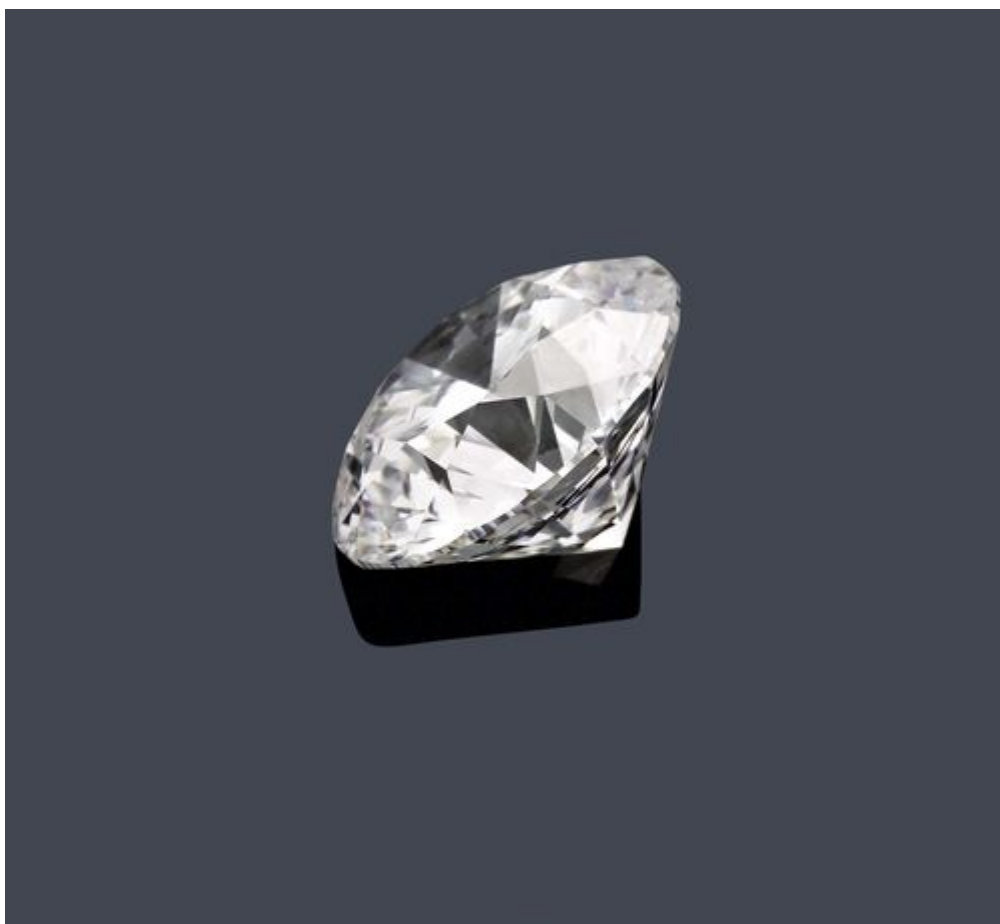
Koller Auktionen - Lot 2084*

A163 Joaillerie - mardi 04 décembre 2012, 14h00



Koller Auktionen - Lot 2084*

A163 Joaillerie - mardi 04 décembre 2012, 14h00



Koller Auktionen - Lot 2084*

A163 Joaillerie - mardi 04 décembre 2012, 14h00



GIA
GEMOLOGICAL INSTITUTE OF AMERICA®

5355 Armada Drive | Carlsbad, CA 92008-4602
T: 760-603-4500 | F: 760-603-1814

GIA Laboratories
Bangkok Carlsbad Gaborone
Johannesburg Mumbai New York
www.gia.edu

DIAMOND GRADING REPORT

GIA REPORT 1146762802

June 11, 2012

Laser Inscription Registry **GIA 1146762802**
Shape and Cutting Style **Round Brilliant**
Measurements **11.65 - 11.73 x 7.25 mm**

GRADING RESULTS - GIA 4CS

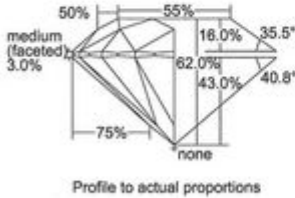
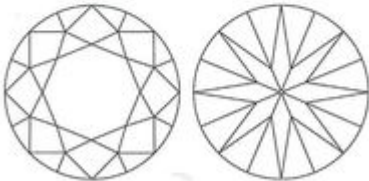
Carat Weight **6.03 carat**
Color Grade **D**
Clarity Grade **INTERNALLY FLAWLESS**
Cut Grade **Excellent**

ADDITIONAL GRADING INFORMATION

Finish
Polish **Excellent**
Symmetry **Excellent**
Fluorescence **None**
Comments:
Minor details of polish are not shown.

REFERENCE DIAGRAMS

GIA COLOR SCALE		GIA CLARITY SCALE		GIA CUT SCALE	
D	FLAWLESS	EXCELLENT			
E	INTERNALLY FLAWLESS	VERY GOOD			
F	VVS ₁	GOOD			
G	VVS ₂	FAIR			
H	VS ₁				
I	VS ₂				
J	S ₁				
K	S ₂				
L					
M					
N					
O					
P					
Q					
R					
S					
T					
U					
V					
W					
X					
Y					
Z					



KEY TO SYMBOLS

Red symbols denote internal characteristics (inclusions). Green or black symbols denote external characteristics (blemishes). Diagram is an approximate representation of the diamond, and symbols shown indicate type, position, and approximate size of clarity characteristics. All clarity characteristics may not be shown. Details of finish are not shown.

This Report is not a guarantee, valuation or appraisal and contains only the characteristics of the diamond described herein after it has been graded, examined and analyzed by the laboratory producing this Report ("GIA") and/or has been analyzed using the techniques and equipment used by GIA at the time of the examination and/or inspection. Inclusions reported in this document are not a guarantee, valuation, or warranty of a diamond's quality, quantity of inclusions or source, or that the diamond will be identifiable by the inscription in the future (since inclusions can be removed). GIA makes no representation concerning any trademark, word, or symbol which is inscribed by GIA or which is identified on this Report. The recipient of this Report may wish to consult a professional dealer or jeweler about the information contained herein.



IMPORTANT LIMITATIONS ON BACK
©2008 GEMOLOGICAL INSTITUTE OF AMERICA, INC.

Koller Auktionen - Lot 2084*

A163 Joaillerie - mardi 04 décembre 2012, 14h00



GIA
GEMOLOGICAL INSTITUTE OF AMERICA®

5355 Armada Drive | Carlsbad, CA 92008-4602

T: 760-933-4500 | F: 760-933-1814

GIA Laboratories

Bangkok Carlsbad Gaborone

Johannesburg Mumbai New York

www.gia.edu

June 11, 2012

DIAMOND TYPE CLASSIFICATION FOR GIA DIAMOND GRADING REPORT #1146762802

Scientists classify diamonds into two main "types" - type I and type II - based on the presence or absence of nitrogen which can replace carbon atoms in a diamond's atomic structure. These two diamond types can be distinguished on the basis of differences in their chemical and physical properties. Type II diamonds contain little if any nitrogen and they are subdivided into two groups (IIa and IIb) both of which are quite rare (less than 2% of all gem diamonds).



According to the records of the GIA Laboratory, the 6.03 carat Round Brilliant diamond described in GIA Diamond Grading Report #1146762802 has been determined to be a **type IIa** diamond. Type IIa diamonds are the most chemically pure type of diamond and often have exceptional optical transparency. Type IIa diamonds were first identified as originating from India (particularly from the Golconda region) but have since been recovered in all major diamond-producing regions of the world.

Among famous gem diamonds, the 530.20 carat Cullinan I and the 105.60 carat Koh-i-noor are examples of type IIa.

PLEASE REFER TO IMPORTANT LIMITATIONS ON THE BACK OF THIS DOCUMENT.

The World's Foremost Authority in Gemology™ | Ensuring the Public Trust through Nonprofit Service since 1931