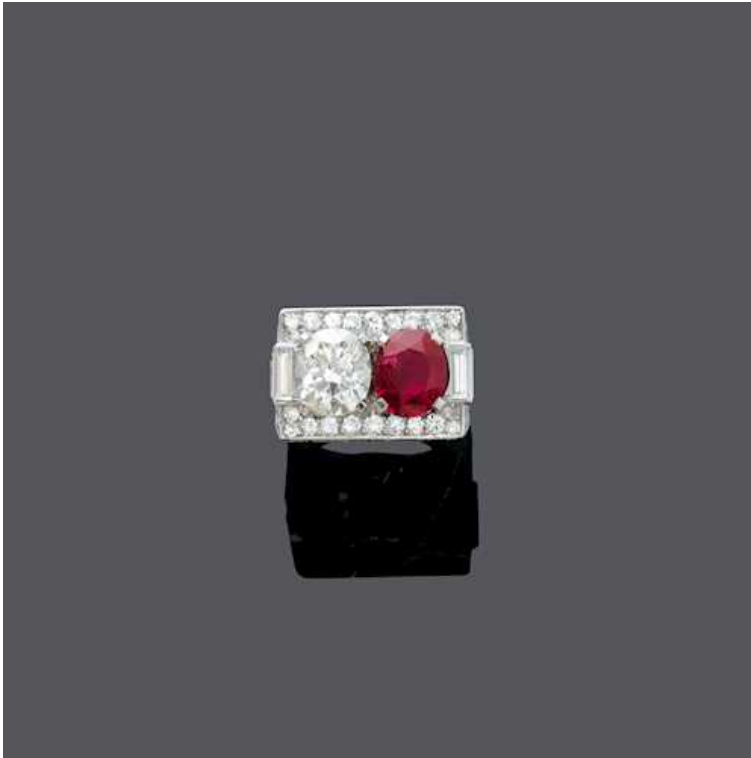


**Koller Auktionen - Lot 2137\***  
**A201 Joaillerie - mercredi 29 juin 2022, 14h00**

---



BURMA RUBY AND DIAMOND RING, BY BULGARI, ca. 1940.

Platinum 950, 14g.

Elegant ring with rectangular front, set with 1 oval diamond of 2.20 ct, J/VS2 and 1 fine, oval, red Burma ruby of 2.81 ct, not heated, flanked by 8 baguette-cut diamonds weighing ca. 0.80 ct and pavé-set with 134 brilliant-cut diamonds totalling ca. 3.00 ct. Signed Bulgari. Size ca. 55.

With GIA-Report no. 2201863811, February 2020, Gübelin Report no. 20010069, January 2020 and confirmation of authenticity, June 2021. The description of this lot is based on the above mentioned report.

CHF 50 000 / 80 000

€ 51 550 / 82 470

**Koller Auktionen - Lot 2137\***  
**A201 Joaillerie - mercredi 29 juin 2022, 14h00**

---



**Koller Auktionen - Lot 2137\***  
**A201 Joaillerie - mercredi 29 juin 2022, 14h00**

---

  
**GÜBELIN**



**GEMMOLOGICAL REPORT**

Report Number 20010069	Colour red
Date 22 January 2020	Species Natural corundum
Item One faceted gemstone	Variety Ruby
Weight 2.81 ct	Origin Burma (Myanmar)
Shape oval	Condition No indications of heating (NTE).
Cut brilliant cut / step cut	Comments See Information Sheet(s).
Measurements 8.59 x 7.46 x 4.80 mm	Important notes and limitations on the reverse.
Transparency transparent	

  
Susy Gübelin

  
Lidia Bellomo



Gübelin Gem Lab  
Lausanne - Hong Kong - New York  
[www.gubelinalgemlab.com](http://www.gubelinalgemlab.com)



**INFORMATION SHEET**  
to Report No. 20010069

**Unheated rubies**

Large rubies of gem-quality are rarely found in nature. Not only is a delicate mineralogical balance essential for this red variety of corundum to be formed deep within the earth, but specific geological conditions as well as adequate pressure and temperature must also be present. Furthermore, the sufficient supply of a rare combination of chemical elements, such as aluminium and chromium, are yet another necessity required for the formation of rubies.

Over the past decades, various heating techniques, as well as the use of chemical additives, have been introduced to increase the supply of rubies resembling the high-quality untreated specimens. The aim of these treatments was and still is to improve the visual appearance of the gemstones.

Prior to the advent of modern heating techniques, rough rubies were cut and polished retaining the quality that nature had originally endowed them with. Therefore, in earlier times, rubies with obvious imperfections were considered and accepted as the norm. However, the expectations with respect to quality (colour and transparency) rose steadily.

The demand for natural, unheated rubies kept growing while the supply of such gems remains highly limited, making natural rubies of gem-quality from all major sources, such as Burma (Myanmar), Mozambique, Madagascar, Kenya, Tanzania, Vietnam, Afghanistan and Tajikistan, difficult to find.

Information Sheets are intended to provide information supplementary to the content of the Report and comment on, for instance, the type of gemstone, the geographic origin and the presence or absence of treatments. By definition, Information Sheets are purely informative in nature (they consist of a standard text and are issued for all types of stones of that particular category). Information Sheets, therefore, do not imply a certain quality or rarity of the stone described in the Gübelin Gem Lab Report which it is attached to.

Gübelin Gem Lab  
Ensemble Hong Kong - New York  
[www.gubelinalgemlab.com](http://www.gubelinalgemlab.com)



INFORMATION SHEET  
to Report No. 20010069

Unheated rubies

Large rubies of gem-quality are rarely found in nature. Not only is a delicate mineralogical balance essential for this red variety of corundum to be formed deep within the earth, but specific geological conditions as well as adequate pressure and temperature must also be present. Furthermore, the sufficient supply of a rare combination of chemical elements, such as aluminium and chromium, are yet another necessity required for the formation of rubies.

Over the past decades, various heating techniques, as well as the use of chemical additives, have been introduced to increase the supply of rubies resembling the high-quality untreated specimens. The aim of these treatments was and still is to improve the visual appearance of the gemstones.


Prior to the advent of modern heating techniques, rough rubies were cut and polished retaining the quality that nature had originally endowed them with. Therefore, in earlier times, rubies with obvious imperfections were considered and accepted as the norm. However, the expectations with respect to quality (colour and transparency) rose steadily.

The demand for natural, unheated rubies kept growing while the supply of such gems remains highly limited, making natural rubies of gem-quality from all major sources, such as Burma (Myanmar), Mozambique, Madagascar, Kenya, Tanzania, Vietnam, Afghanistan and Tajikistan, difficult to find.

Information Sheets are intended to provide information supplementary to the contents of the Report and comment on, for instance, the type of gemstone, the geographic origin and the presence or absence of treatments. By definition, Information Sheets are purely informative in nature: they consist of a standard text and are issued for all types of stones of that particular category. Information Sheets, therefore, do not imply a certain quality or rarity of the stones described in the Gübelin Gem Lab Report which it is attached to.

Gübelin Gem Lab  
Lucerne · Hong Kong · New York  
[www.gubelinalgemlab.com](http://www.gubelinalgemlab.com)

**Koller Auktionen - Lot 2137\***  
**A201 Joaillerie - mercredi 29 juin 2022, 14h00**



**GIA NATURAL DIAMOND GRADING REPORT**

February 03, 2020  
 GIA Report Number: 2201863811  
 Shape and Cutting Style: Oval Brilliant  
 Measurements: 8.49 x 7.77 x 5.03 mm

**GRADING RESULTS**

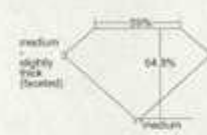
Carat Weight: 2.25 carat  
 Color Grade: J  
 Clarity Grade: VS2

**ADDITIONAL GRADING INFORMATION**

Pulse: Very Good  
 Symmetry: Very Good  
 Fluorescence: Faint  
 Measuring Lab: GIA 2201863811  
 Customized Proportions are not shown.

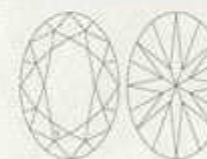
GIA REPORT  
 2201863811  
© GIA 2020. Report ID 950-000

**PROPORTIONS**



Profile not to actual proportions

**CLARITY CHARACTERISTICS**




**KEY TO SYMBOLS**

- Copal
- Inclusions
- Deletions
- Resin

\* See website for more information on grading. Color is based on the International Color Scale. Clarity is based on the International Clarity Scale. Report is an equivalent measurement of the diamond and is not intended to be used for comparison of two diamonds. All rights reserved. Report is the property of GIA and is not to be reproduced without written permission.


**GRADING SCALES**

GIA COLOR SCALE		GIA CLARITY SCALE	
Color	Clarity	Color	Clarity
D	FL	I1	SI1
E	VS2	I2	SI2
F	VS1	I3	S1
G	VS2	I4	S2
H	VS1	I5	S3
I	VS2	I6	S4
J	VS1	I7	S5
K	VS2	I8	S6
L	VS1	I9	S7
M	VS2	I10	S8
N	VS1	I11	S9
O	VS2	I12	S10
P	VS1	I13	S11
Q	VS2	I14	S12
R	VS1	I15	S13
S	VS2	I16	S14
T	VS1	I17	S15
U	VS2	I18	S16
V	VS1	I19	S17
W	VS2	I20	S18
X	VS1	I21	S19
Y	VS2	I22	S20
Z	VS1	I23	S21
ZZ	VS2	I24	S22
AAA	VS1	I25	S23
AA	VS2	I26	S24
A	VS1	I27	S25
B	VS2	I28	S26
C	VS1	I29	S27
D	VS2	I30	S28
E	VS1	I31	S29
F	VS2	I32	S30
G	VS1	I33	S31
H	VS2	I34	S32
I	VS1	I35	S33
J	VS2	I36	S34
K	VS1	I37	S35
L	VS2	I38	S36
M	VS1	I39	S37
N	VS2	I40	S38
O	VS1	I41	S39
P	VS2	I42	S40
Q	VS1	I43	S41
R	VS2	I44	S42
S	VS1	I45	S43
T	VS2	I46	S44
U	VS1	I47	S45
V	VS2	I48	S46
W	VS1	I49	S47
X	VS2	I50	S48
Y	VS1	I51	S49
Z	VS2	I52	S50



This report is provided to the user for their reference only. It is not intended to be used for comparison of two diamonds. All rights reserved. Report is the property of GIA and is not to be reproduced without written permission.

Report ID 950-000



© GIA 2020. Report ID 950-000

**Koller Auktionen - Lot 2137\***  
**A201 Joaillerie - mercredi 29 juin 2022, 14h00**

---



**To whom it may concern**

This is to confirm that, in my opinion and to the best of my knowledge, the above illustrated ring in platinum with a cushion-shaped ruby and diamond at the centre with smaller circular-cut and baguettes diamonds on the bezel and shoulders, signed "BVLGARI" was manufactured in the late 1930s- early 1940s and retailed by Bulgari.

*Bezel measuring 2.1 x 1.9 cm, weighing 14 grams*

Amanda Triossi MA, FGA

Author and Specialist on Bulgari  
Former Curator of the Bulgari Heritage Collection and Curator of all major Bulgari Retrospective Exhibitions from 2009 to 2013

Rome, 18 June 2021

---

AMANDA TRIOSI • MA, FGA  
amanda@triosi.com • www.triosi.com  
Via del Velabro, 4 • 00186 Roma • Tel. (+39) 539 8750041 • (+39) 06 6780903